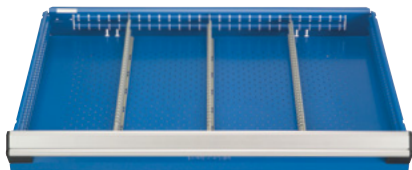


Accessories

Partitioning Accessories

The layout connection system (snap-on) keeps the dividers in place and reduces noise caused by vibrations. **PATENTED**

Front to Back Partition

RG00


Divides the drawer along its depth;
Dividers are locked into place by clip system;
Adjustable every inch center to center (c/c);
Color : light gray (071);
Compatible with the following accessories : plastic bins, groove trays, hanging file bars and drawer liners.

Drawer Depth Nominal (real)	Drawer Height						
	3" 1 5/8" high	4" 2 5/8" high	5" 3 5/8" high	6" and 7" 4 5/8" high	8" and 9" 6 5/8" high	10" 8 5/8" high	12" and 14" 10 5/8" high
18" (15")	RG00-1803	RG00-1804	RG00-1805	RG00-1806	RG00-1808	RG00-1810	RG00-1812
21" (18")	RG00-2103	RG00-2104	RG00-2105	RG00-2106	RG00-2108	RG00-2110	RG00-2112
24" (21")	RG00-2403	RG00-2404	RG00-2405	RG00-2406	RG00-2408	RG00-2410	RG00-2412
27" (24")	RG00-2703	RG00-2704	RG00-2705	RG00-2706	RG00-2708	RG00-2710	RG00-2712

Left to Right Partition

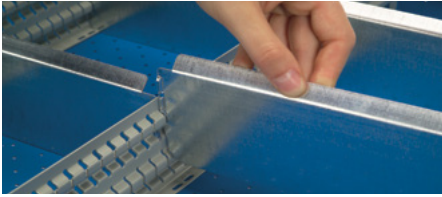
RG01


Divides the drawer along its width;
Dividers are locked into place by clip system;
Adjustable every half inch center to center (c/c);
Color : light gray (071);
Compatible with the following accessories : plastic bins, groove trays, hanging file bars and drawer liners.

Drawer Width Nominal (real)	Drawer Height						
	3" 1 5/8" high	4" 2 5/8" high	5" 3 5/8" high	6" and 7" 4 5/8" high	8" and 9" 6 5/8" high	10" 8 5/8" high	12" and 14" 10 5/8" high
18" (14")	RG01-1803	RG01-1804	RG01-1805	RG01-1806	RG01-1808	RG01-1810	RG01-1812
24" (20")	RG01-2403	RG01-2404	RG01-2405	RG01-2406	RG01-2408	RG01-2410	RG01-2412
30" (26")	RG01-3003	RG01-3004	RG01-3005	RG01-3006	RG01-3008	RG01-3010	RG01-3012
36" (32")	RG01-3603	RG01-3604	RG01-3605	RG01-3606	RG01-3608	RG01-3610	RG01-3612
42" (38")	RG01-4203	RG01-4204	RG01-4205	RG01-4206	RG01-4208	RG01-4210	RG01-4212
48" (44")	RG01-4803	RG01-4804	RG01-4805	RG01-4806	RG01-4808	RG01-4810	RG01-4812
54" (50")	RG01-5403	RG01-5404	RG01-5405	RG01-5406	RG01-5408	RG01-5410	RG01-5412
60" (56")	RG01-6003	RG01-6004	RG01-6005	RG01-6006	RG01-6008	RG01-6010	RG01-6012

Drawer Divider

RG10



Clips into place;
45° angle at top for easy retrieval and identification of parts;
Made in galvanized steel;
Adjustable every half inch center to center (c/c).

Divider Width Nominal	Drawer Height						
	3" 1 5/8" high	4" 2 5/8" high	5" 3 5/8" high	6" and 7" 4 5/8" high	8" and 9" 6 5/8" high	10" 8 5/8" high	12" and 14" 10 5/8" high
3"	RG10-03003	RG10-03004	RG10-03005	RG10-03006	-	-	-
*3.5"	RG10-03503	RG10-03504	RG10-03505	RG10-03506	-	-	-
4"	RG10-04003	RG10-04004	RG10-04005	RG10-04006	-	-	-
5"	RG10-05003	RG10-05004	RG10-05005	RG10-05006	RG10-05008	RG10-05010	-
*5.5"	RG10-05503	RG10-05504	RG10-05505	RG10-05506	RG10-05508	RG10-05510	-
6"	RG10-06003	RG10-06004	RG10-06005	RG10-06006	RG10-06008	RG10-06010	RG10-06012
*6.5"	RG10-06503	RG10-06504	RG10-06505	RG10-06506	RG10-06508	RG10-06510	RG10-06512
7"	RG10-07003	RG10-07004	RG10-07005	RG10-07006	RG10-07008	RG10-07010	RG10-07012
8"	RG10-08003	RG10-08004	RG10-08005	RG10-08006	RG10-08008	RG10-08010	RG10-08012
9"	RG10-09003	RG10-09004	RG10-09005	RG10-09006	RG10-09008	RG10-09010	RG10-09012
*9.5"	RG10-09503	RG10-09504	RG10-09505	RG10-09506	RG10-09508	RG10-09510	RG10-09512
10"	RG10-10003	RG10-10004	RG10-10005	RG10-10006	RG10-10008	RG10-10010	RG10-10012
11"	RG10-11003	RG10-11004	RG10-11005	RG10-11006	RG10-11008	RG10-11010	RG10-11012
12"	RG10-12003	RG10-12004	RG10-12005	RG10-12006	RG10-12008	RG10-12010	RG10-12012
13"	RG10-13003	RG10-13004	RG10-13005	RG10-13006	RG10-13008	RG10-13010	RG10-13012
14"	RG10-14003	RG10-14004	RG10-14005	RG10-14006	RG10-14008	RG10-14010	RG10-14012
16"	RG10-16003	RG10-16004	RG10-16005	RG10-16006	RG10-16008	RG10-16010	RG10-16012

*Theses dimensions are not compatible with all the width of drawer.

Accessories

Label Holder and Handle Protector

1" H Label Holder

RG51

Made of transparent, matte finished plastic that eliminates glare. Labels are easy to read;

Once clipped in place, the label holders are firmly attached and do not come off when retrieving an object;

Have a fold to protect label from damage;

Available in two sizes : 2" for all applications (universal) and 2 3/4" for accessories wider than 3";

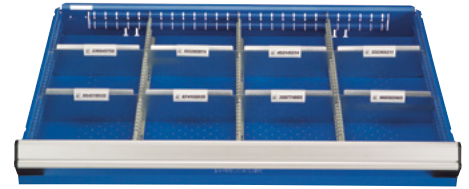
Can be attached to drawer partitions and dividers;

Note : Paper strips are not included with the label holder but are available in packs of 200.

Product #	W x H
RG51-200	2" x 1"
RG51-275	2 3/4" x 1"

Paper strips (packs of 200) **RG53**

Product #	W x H
RG53-275875	2 3/4" x 7/8"



1" H Label Holder with Adhesive Strip for Plastic Bin

RG52


Made of transparent, matte finished plastic that eliminates glare. Labels are easy to read;

Adhesive strip for installation on the RG20 plastic bins. Also for installation to the back of the drawer, allowing identification of the last compartment;

Has a fold to protect label from damage;

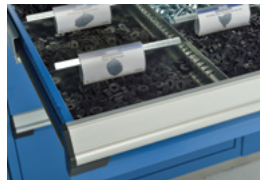
Note : Paper strips are not included with the label holder but are available in packs of 200.

Product #	W x H
RG52-200	2" x 1"

Paper strips (packs of 200) **RG53**

Product #	W x H
RG53-275875	2 3/4" x 7/8"

1 3/4" H Label Holder

RG54


Made of transparent, matte finished plastic that eliminate glare. Labels are easy to read;

Once clipped in place, the label holders are firmly attached and do not come off when retrieving an object;

Have a fold to protect label from damage;

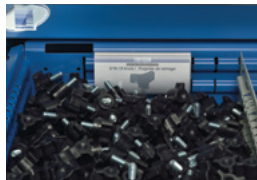
Offered in 2 standard widths: 2" and 4";

Can be attached to drawer dividers;

Note : Paper strips are not included with the label holder.

Product #	W x H
RG54-200	2" x 1 3/4"
RG54-400	4" x 1 3/4"

1 3/4" H Label Holder with Adhesive Strip

RG55


Made of transparent, matte finished plastic that eliminate glare. Labels are easy to read;

Includes an adhesive strip for installation on the back of the drawer, to identify the last compartment;

Have a fold to protect label from damage;

Offered in 2 standard widths: 2" and 4";

Note : Paper strips are not included with the label holder.

Product #	W x H
RG55-200	2" x 1 3/4"
RG55-400	4" x 1 3/4"

Handle Protector

RF70


Installs by clipping onto the drawer or roll-out shelf handle;

Made of transparent, matte finished plastic that eliminates glare. Labels are easy to read;

Protects identification labels from dust, grease and dirt;

Easy to remove.

Product #	Width
RF70-18	18"
RF70-24	24"
RF70-30	30"
RF70-36	36"
RF70-42	42"
RF70-48	48"
RF70-54	54"
RF70-60	60"

Labels

RF71


Labels designed to be inserted on handles under the handle protector (RF70);

22 labels per page (10 pages);

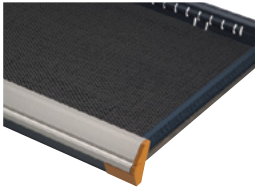
Print the labels of your choice. A template is available at rousseau-metal.com in the Documents (Information Center).

Product #	W x H
RF71-425100	4 1/2" x 1"

Drawer Accessories

PVC Drawer Liner

RG40



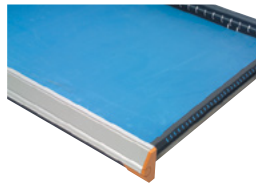
Protects stored material;
Non-skid surface;
May be installed under partitions and dividers;
Thickness : $\frac{3}{32}$ ";
Note : Not for use with ESD cabinets.

Product #	For Drawer
RG40-1821-01	18"W x 21"D
RG40-1824-01	18"W x 24"D
RG40-1827-01	18"W x 27"D
RG40-2421-01	24"W x 21"D
RG40-2424-01	24"W x 24"D
RG40-2427-01	24"W x 27"D
RG40-3018-01	30"W x 18"D
RG40-3021-01	30"W x 21"D
RG40-3024-01	30"W x 24"D
RG40-3027-01	30"W x 27"D
RG40-3618-01	36"W x 18"D
RG40-3624-01	36"W x 24"D
RG40-3627-01	36"W x 27"D

Product #	For Drawer
RG40-4218-01	42"W x 18"D
RG40-4224-01	42"W x 24"D
RG40-4818-01	48"W x 18"D
RG40-4824-01	48"W x 24"D
RG40-4827-01	48"W x 27"D
RG40-5424-01	54"W x 24"D
RG40-5427-01	54"W x 27"D
RG40-6024-01	60"W x 24"D
RG40-6027-01	60"W x 27"D

Foam for Protection

RG41



Protects stored material;
Blue foam, $\frac{1}{4}$ " thick;
Note : Partitions and dividers may not be used with this foam.

Product #	For Drawer
RG41-1821-01	18"W x 21"D
RG41-1824-01	18"W x 24"D
RG41-1827-01	18"W x 27"D
RG41-2421-01	24"W x 21"D
RG41-2424-01	24"W x 24"D
RG41-2427-01	24"W x 27"D
RG41-3018-01	30"W x 18"D
RG41-3021-01	30"W x 21"D
RG41-3024-01	30"W x 24"D
RG41-3027-01	30"W x 27"D
RG41-3618-01	36"W x 18"D
RG41-3624-01	36"W x 24"D
RG41-3627-01	36"W x 27"D

Product #	For Drawer
RG41-4218-01	42"W x 18"D
RG41-4224-01	42"W x 24"D
RG41-4818-01	48"W x 18"D
RG41-4824-01	48"W x 24"D
RG41-4827-01	48"W x 27"D
RG41-5424-01	54"W x 24"D
RG41-5427-01	54"W x 27"D
RG41-6024-01	60"W x 24"D
RG41-6027-01	60"W x 27"D

Foam for Tools

RG42



Oil-resistant and non-absorbent;
1 blue foam, $\frac{1}{4}$ " thick;
1 black self-adhesive $\frac{1}{2}$ " thick foam;
Sold without cut-outs. May be cut using a utility knife.

Product #	For Drawer
RG42-1821-01	18"W x 21"D
RG42-1824-01	18"W x 24"D
RG42-1827-01	18"W x 27"D
RG42-2421-01	24"W x 21"D
RG42-2424-01	24"W x 24"D
RG42-2427-01	24"W x 27"D
RG42-3018-01	30"W x 18"D
RG42-3021-01	30"W x 21"D
RG42-3024-01	30"W x 24"D
RG42-3027-01	30"W x 27"D
RG42-3618-01	36"W x 18"D
RG42-3624-01	36"W x 24"D
RG42-3627-01	36"W x 27"D

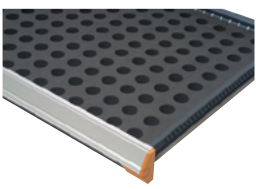
Product #	For Drawer
RG42-4218-01	42"W x 18"D
RG42-4224-01	42"W x 24"D
RG42-4818-01	48"W x 18"D
RG42-4824-01	48"W x 24"D
RG42-4827-01	48"W x 27"D
RG42-5424-01	54"W x 24"D
RG42-5427-01	54"W x 27"D
RG42-6024-01	60"W x 24"D
RG42-6027-01	60"W x 27"D



Sold without cut-outs.

Foam for Collets

RG43



Oil-resistant and non-absorbent;
Black foam, 1" thick;
Sold without cut-outs. May be cut using a hole punch.

Product #	For Drawer
RG43-1821-01	18"W x 21"D
RG43-1824-01	18"W x 24"D
RG43-1827-01	18"W x 27"D
RG43-2421-01	24"W x 21"D
RG43-2424-01	24"W x 24"D
RG43-2427-01	24"W x 27"D
RG43-3018-01	30"W x 18"D
RG43-3021-01	30"W x 21"D
RG43-3024-01	30"W x 24"D
RG43-3027-01	30"W x 27"D
RG43-3618-01	36"W x 18"D
RG43-3624-01	36"W x 24"D



Sold without cut-outs.

Accessories

Plastic Bin


RG20


Simplify storing, moving and managing small items. Lightweight and resistant;

Designed for 3" and 4" high drawers;

45° angle for easy identification of bin contents and removal of bins;

Compatible with louvered panels (SH65, SH66 and WM55) and plastic bin rails (SH62, WM28 and WM9C);

Compatible with the following accessories : partitions, dividers and groove trays;

6" bins can be partitioned.



NOTE Height 2" = 1 1/2" real
Height 3" = 2 1/2" real

Dimensions			Product #		
W	D	H	Bin	Partition	Divider
3"	3"	2"	RG20-030302	-	-
4"	3"	2"	RG20-040302	-	-
6"	3"	2"	RG20-060302	RG22-0302	-
6"	6"	2"	RG20-060602	RG22-0602	RG24-0602
3"	3"	3"	RG20-030303	-	-
4"	3"	3"	RG20-040303	-	-
6"	3"	3"	RG20-060303	RG22-0303	-
6"	6"	3"	RG20-060603	RG22-0603	RG24-0603

Conductive Plastic Bin


RG21


Dissipates electric charges that can damage electronic components;

Make storing, moving and inventory of small parts easier. Lightweight and resistant;

Designed for 3" and 4" high drawers;

45° angle for easy identification of bin contents and removal of bins;

Compatible with louvered panels (SH65, SH66 and WM55) and plastic bin rails (SH62, WM28 and WM9C);

Compatible with the following accessories : partitions, dividers and groove trays;

Color : Black;

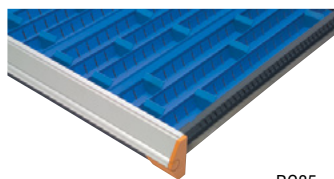
6" bins can be partitioned.



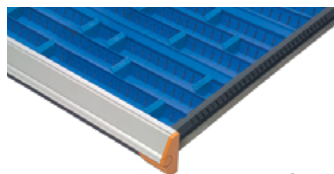
NOTE Height 2" = 1 1/2" real
Height 3" = 2 1/2" real

Dimensions			Product #		
W	D	H	Bin	Partition	Divider
3"	3"	2"	RG21-030302	-	-
4"	3"	2"	RG21-040302	-	-
6"	3"	2"	RG21-060302	RG23-0302	-
6"	6"	2"	RG21-060602	RG23-0602	RG25-0602
3"	3"	3"	RG21-030303	-	-
4"	3"	3"	RG21-040303	-	-
6"	3"	3"	RG21-060303	RG23-0303	-
6"	6"	3"	RG21-060603	RG23-0603	RG25-0603

Groove Tray

RG35 / RG36


RG35



RG36

Useful in storing and protecting long objects such as drill bits, borers, sockets, lathe parts, files, tools, etc.;

Blue color for easy retrieval of parts;

Designed for 3" and 4" high drawers;

Compatible with the following accessories: partitions, dividers and plastic bins;

Complete the product number by choosing the desired depth : 18", 21", 24", 27", or the desired width: 18", 24", 30", 36", 42", 48", 54", 60".

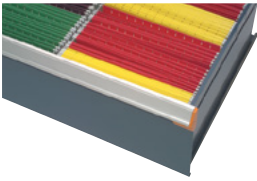
NOTE For inside drawer measurements

SEE PAGE 193-194

Product #		Divider #
Front to back	Left to right	
RG35-04__10	RG36-__0410	RG39-10
RG35-06__10	RG36-__0610	
RG35-04__15	RG36-__0415	RG39-15
RG35-06__15	RG36-__0615	
RG35-06__25	RG36-__0625	RG39-25

Hanging File Bars

RG30 / RG31



Designed to store hanging files;
For storing either letter or legal size files,
depending on the drawer dimensions;
Made for 12" and 14" high drawers;
Compatible with partitions and dividers.

SEE
PAGES
214-215

Front to Back Bars		Left to Right Bars	
Product #	Nominal Depth (real)	Product #	Nominal Depth (real)
RG30-18	18" (15")	RG31-18	18" (14")
RG30-21	21" (18")	RG31-24	24" (20")
RG30-24	24" (21")	RG31-30	30" (26")
RG30-27	27" (24")	RG31-36	36" (32")
		RG31-42	42" (38")
		RG31-48	48" (44")

Waste & Recycling Drawer



Allows sorting objects for recycling;
Identification on the drawer handle to facilitate
sorting;
Drawer heights available : 17" and 26";
The 17" H drawer has two containers of
14 3/8" W x 10 1/4" D x 15" H, the black one for
waste and the blue one for recycling;
The 26" H drawer has two containers of
15 1/4" W x 11" D x 20" H, the black one for waste
and the blue one for recycling;
The drawer has one divider to stabilize the
containers and also allows storing objects
behind;
To add a locking or security mechanism,
complete with product # needed.
Ex.: R51CG-X1701A to add an integrated
lock-in mechanism.

Product #	W x D x H
R51CG-X1701	24" x 27" x 17"
R51CG-X2601	24" x 27" x 26"
R51DG-X1701	30" x 27" x 17"
R51DG-X2601	30" x 27" x 26"



R5XLG-3004

Locking and Security Mechanisms

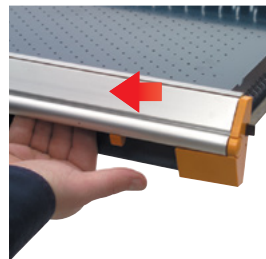
Integrated Lock-In Mechanism



Activated by tilting the handle up;
Allows you to open the drawer and roll-out
shelf with one hand only;
Close the drawer and roll-out shelf by simply
pushing it;
Stops drawer and roll-out shelf from opening
on their own in mobile applications;
Easy to retrofit;
Order by adding A to the drawer or roll-out
shelf or partitioning model number.
Ex.: RF32-362406A;
For replacement parts or to retrofit this
mechanism, order RY08-WWA.

Product #
A

Econo Lock-In Mechanism



Activated with the right hand by sliding the
mechanism with your thumb;
Drawer and roll-out shelf close without having
to reactivate the slide mechanism;
Stops drawer and roll-out shelf from opening
on their own;
Order by adding B to the drawer or roll-out
shelf or partitioning model number.
Ex.: RF32-362406B;

For replacement parts or to retrofit this
mechanism, order RY01-B.

Product #
B

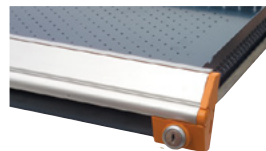
Lock-Out Mechanism



For both drawers and roll-out shelves;
Locks in open position;
Activated manually, only when required;
Compatible with all drawer accessories;
Plastic bins positioned in the back row, may
make it more difficult to activate mechanism.

Product #
RF85

Drawer Lock



KA, KD or MK

SEE
PAGE
256

Compatible with all drawer and roll-out shelf
dimensions;
Does not affect usable drawer space;
Easy to retrofit;
Order by adding L3 to drawer or partitioning
model number.
Ex.: RF32-362406L3;

For replacement parts or to retrofit this
mechanism, order RY01-L3.

Product #
L3